

# Doha

## L7119

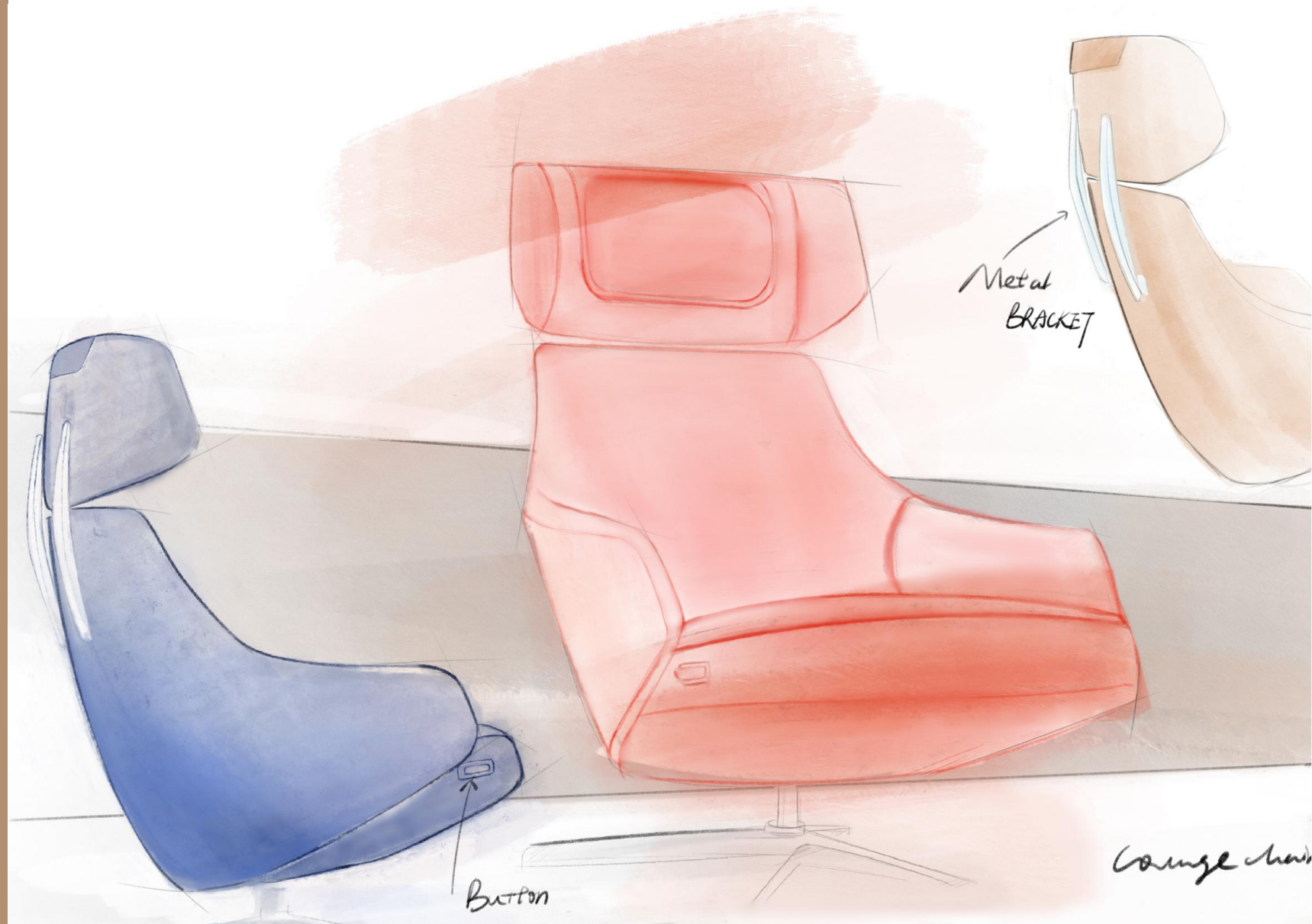
---

Space to think, space to dream.



## Design Concept

The smooth contours and rounded curves of the Doha recliner are inspired by the shape of sand dunes. It consists of a ridge-like sleek frame and a seating surface soft as flowing sand. It consists of a ridge-like sleek frame and a seating surface soft as flowing sand.







Doha focuses on smooth lines and fine details. Every angle has been carefully adjusted and each part has been attentively crafted to create a chair that is not only beautiful but comfortable to sit in.

---



## STRONG AND CLASSICAL LINES, TIMELESS ALLURE

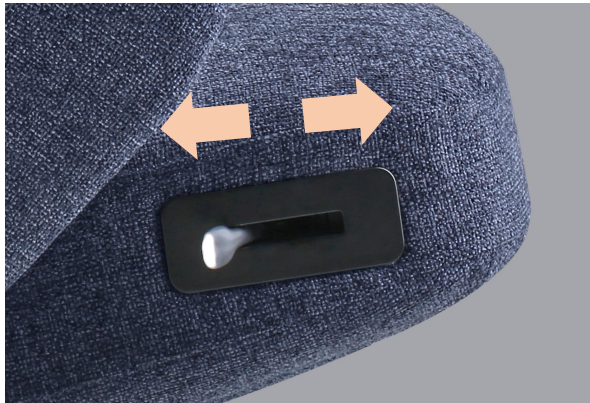
Doha creates a sense of being in a quiet space as it helps to block out visual and acoustic distractions. The back is engineered to embrace the user's body and support the ideal posture when working on a laptop.





## Reclining Function

Doha allows the user to move from an upright position to a reclined angle for rest, with the backrest lockable in different positions of stepped-up recline angles. The resistance of the backrest can be manually adjusted based on the user's weight.





















### **Headrest**

Dual-layer construction with soft and firm support.

### **Structure**

Iron frame with integrated foam padding.

### **Upholstery**

PU leather/Fabric upholstery.

### **Padding**

Multi-layer molded foam with 4D Air Fiber POE.

### **DONATI Mechanism**

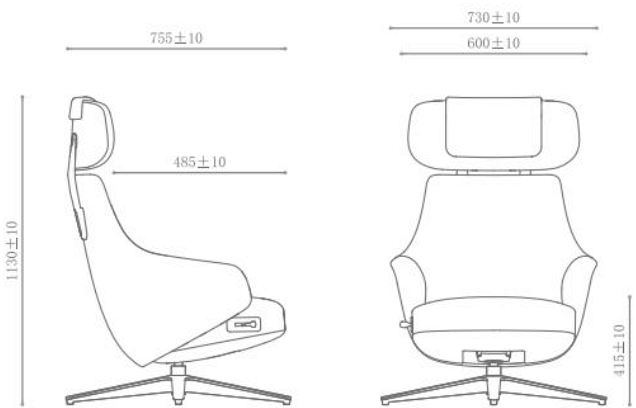
4-level wire control switch to locate the best tilting angle; with a rotary to adjust the recline strength.

### **Base**

Large, durable polished aluminum alloy base for stability.



# Packaging & Loading



Carton size: 29-1/2"L\*25-3/4"W\*30-1/2"H / K=K/250P / 1PC/CTN  
Net weight: 26.5KG                      Gross weight: 31.7KG  
Loading capacity: 20GP: 79PCS // 40GP: 160PCS // 40HQ: 162PCS  
CBM: 0.38 M3

## Fabric



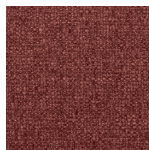
FC3501  
Beige



FC3502  
Blue



FC3503  
Green



FC3504  
Pink

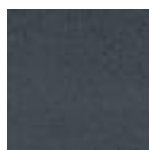


FC3505  
Gray

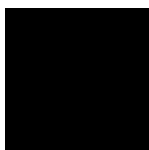
## PU Leather



PU0901  
Amber



PU0902  
Navy blue



PU0903  
Black





# CONTACT US

---

## B.one Factory

Add: No.1,3 Youyi Road,Tangxia Town,Dongguan City,  
Guangdong Province,China  
Tel: +86-769-8685 5575      Fax: +86-769-86856603

---

## WSK Home Furnishing Co., Ltd

Add: A2101, Xintian CBC, Shixia North Road II, Futian District  
Shenzhen City, Guangdong Province, China  
Tel: +86-755-82828666      Fax: +86-755-83717161

---

[www.cjfurniture.com.cn](http://www.cjfurniture.com.cn)

