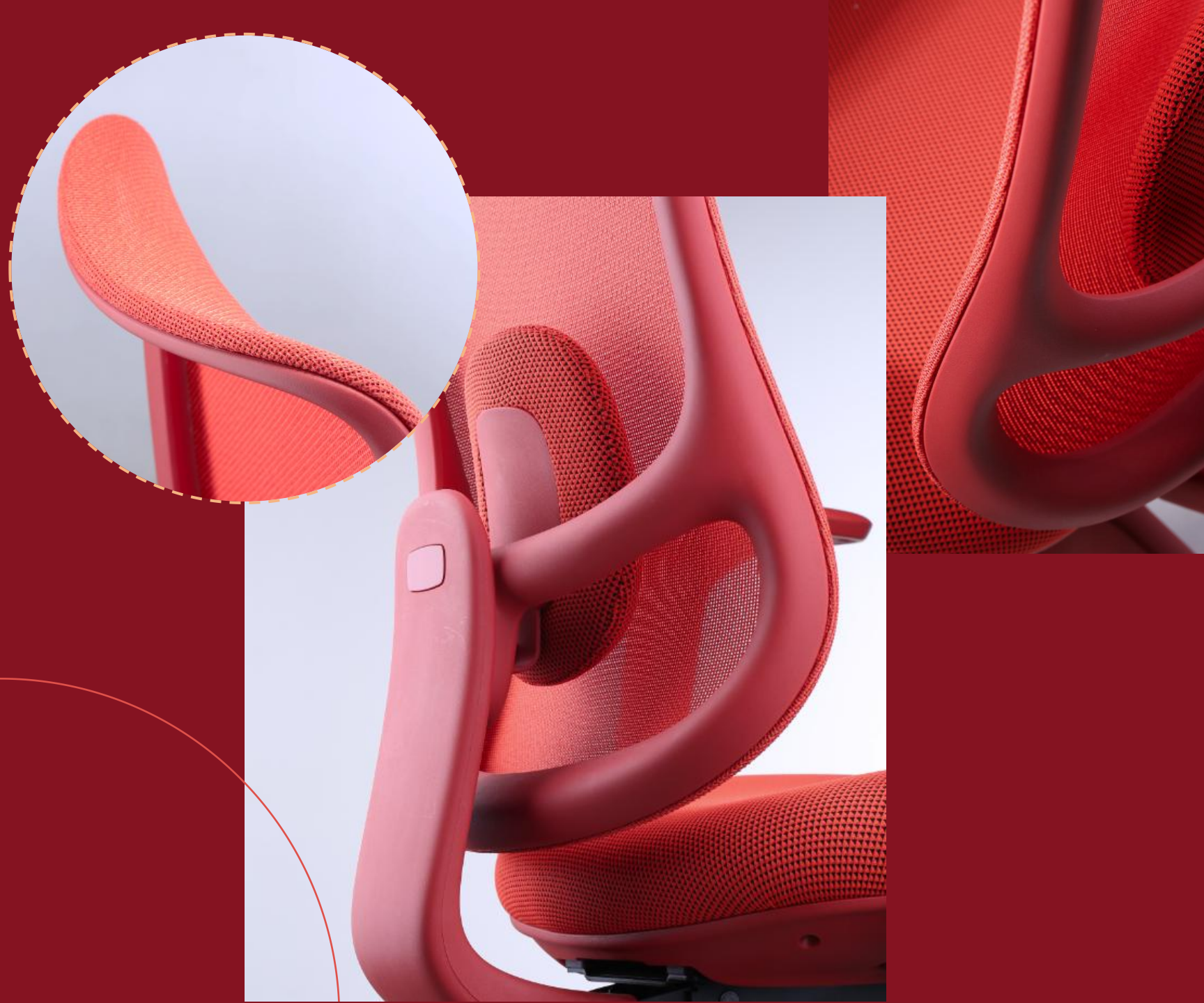


Stylen

D271

Superior back support for long hours.





Design Concept

The backrest design of Stylen resembles the trunk of a tree, combining natural beauty with solid support. The designer skillfully incorporates the shape of a tree trunk into the backrest through the use of lines and structure, making it not only visually striking but also comfortable and healthy to use. This design conveys the power and beauty of nature while enhancing the overall quality of the office space.

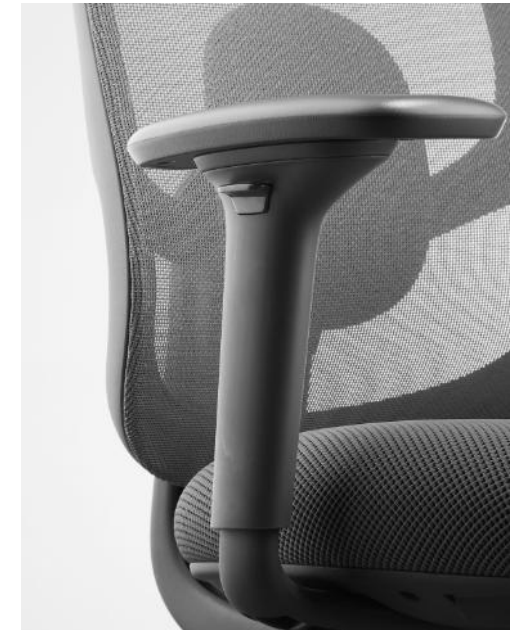


Easy Adjustment

Stylen's tilt mechanism and lumbar support adjustment allow you to effortlessly adjust your sitting posture. Whether focusing on work or relaxing, you can enjoy perfect support and comfort.

- Maximum reclining angle: 135°
- Lumbar support: Height adjustable / 5 levels / stroke 45mm





Large Rounded Armrests

The 3D armrests with soft PU covering not only feature a rounded appearance but also provide comprehensive arm support functionality.

- 7 locking positions, 70mm up&down stroke distance
- 7 locking positions, 40mm forward&backward stroke distance
- 5 locking positions, 25mm left & right stroke distance



Hit the Sweet Spot

Its refined ergonomic design instantly responds to your body, movements, and posture, providing natural balance and comprehensive support.





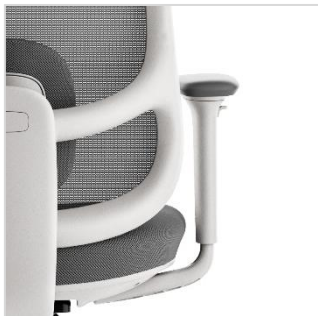
Colorful Choices, Versatile Style

Stylen offers three stylish color options: classic black, elegant beige, and vibrant red, catering to your diverse aesthetic preferences.

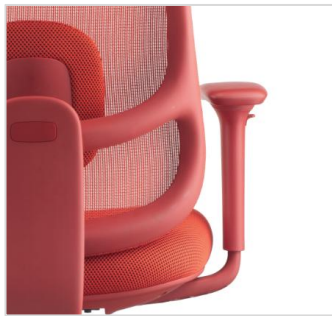


More options

Frame



Off-White



Coral Red



Classic Black

Mechanism



G015-13
23° tilting angle with 3 locking positions

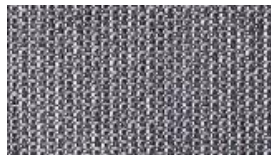


F027-59
21° tilting angle with 4 locking positions

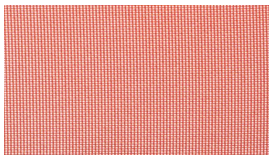
Headrest /Backrest Mesh



FB3001



FB3002

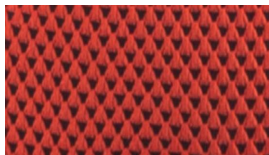


FB3003

Seat / Lumbar Support Fabric



FC3701



FC3702

Height Adjustable Headrest

9 locking positions, 70mm up&down stroke distance;
100% BIFMA standard.

Breathable Mesh Back

Color fastness up to level 4;
Wear-Resistant Test 30,000 times
without broken yarn.

3D Armrests

With up and down, forward and
backward, left and right adjustments,
it can easily provide perfect support
for your arms.

Comfortable Backrest

Maximum 135° recline angles,
perfectly fitting the body shape.

High Density Molded Foam

CA117 fire retardant standard
100% BIFMA standard.

Upholstered Lumbar Support

Comfortable support, relieve back tension.
5 levels 45mm lifting stroke.

Adjustable Seat Depth

60mm Slide forward and backward

Synchro Mechanism

- ① G015-13
23° back tilting in 3 locking positions,
with rotary knob to meet the comfort
tilt tension.
- ② F027-59
21° back tilting in 4 locking positions.

Class 3 Gas Lift

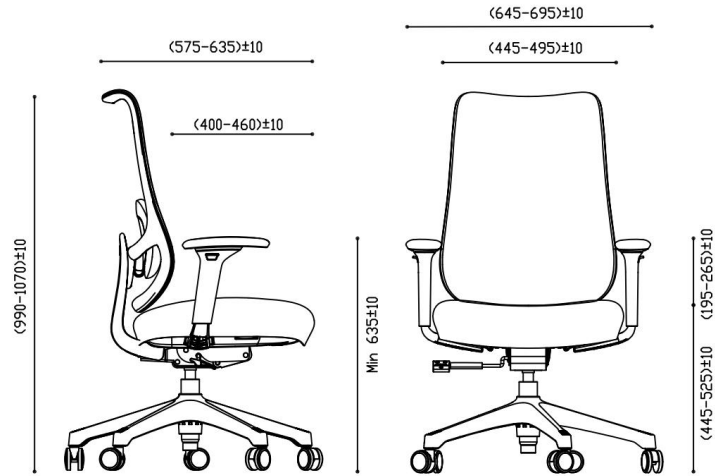
Effective stroke 90mm,
suitable for different heights.

Plastic Base

Stable structure and 300lbs
load-bearing capacity.



Size & Packing



D.2710M-000001

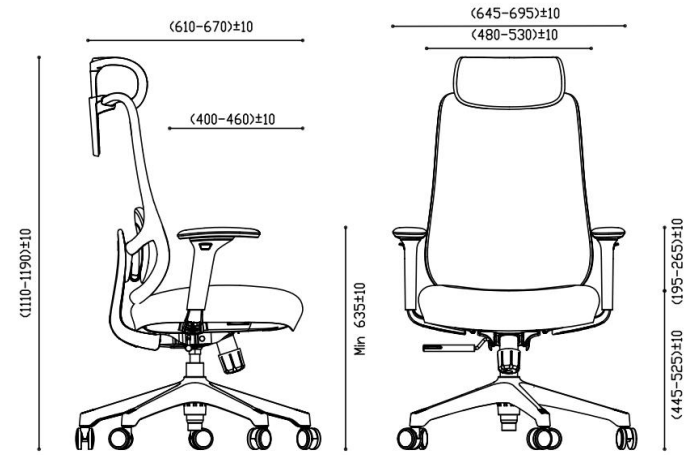
Carton Size : 32"L * 12-3/4"W * 26"H/K=K 250P

Packing : 1pcs

Net weight : 15.4 KG Gross weight : 18.2 KG

Loading quantity : 20GP: 169PCS // 40GP: 348PCS // 40HQ: 400PCS

CBM : 0.1738



D.2710H-000001

Carton Size : 32"L * 12-3/4"W * 26"H/K=K 250P

Packing : 1pcs

Net weight : 16.3 KG Gross weight : 19.1 KG

Loading quantity : 20GP: 169PCS // 40GP: 348PCS // 40HQ: 400PCS

CBM : 0.1738



CONTACT US

B.one Industrial Park

Factory: No.1,3 Youyi Road, Tangxia Town, Dongguan, Guangdong, China

Tel: +86-769-8685 6607 Fax: +86-769-8685 5577

Global Operations Office

A2101, Xintian CBC, Shixia North Road II, Futian District, Shenzhen, China

Tel: +86-755-8282 8666 Fax: +86-755-8371 7161

www.cjfurniture.com.cn

