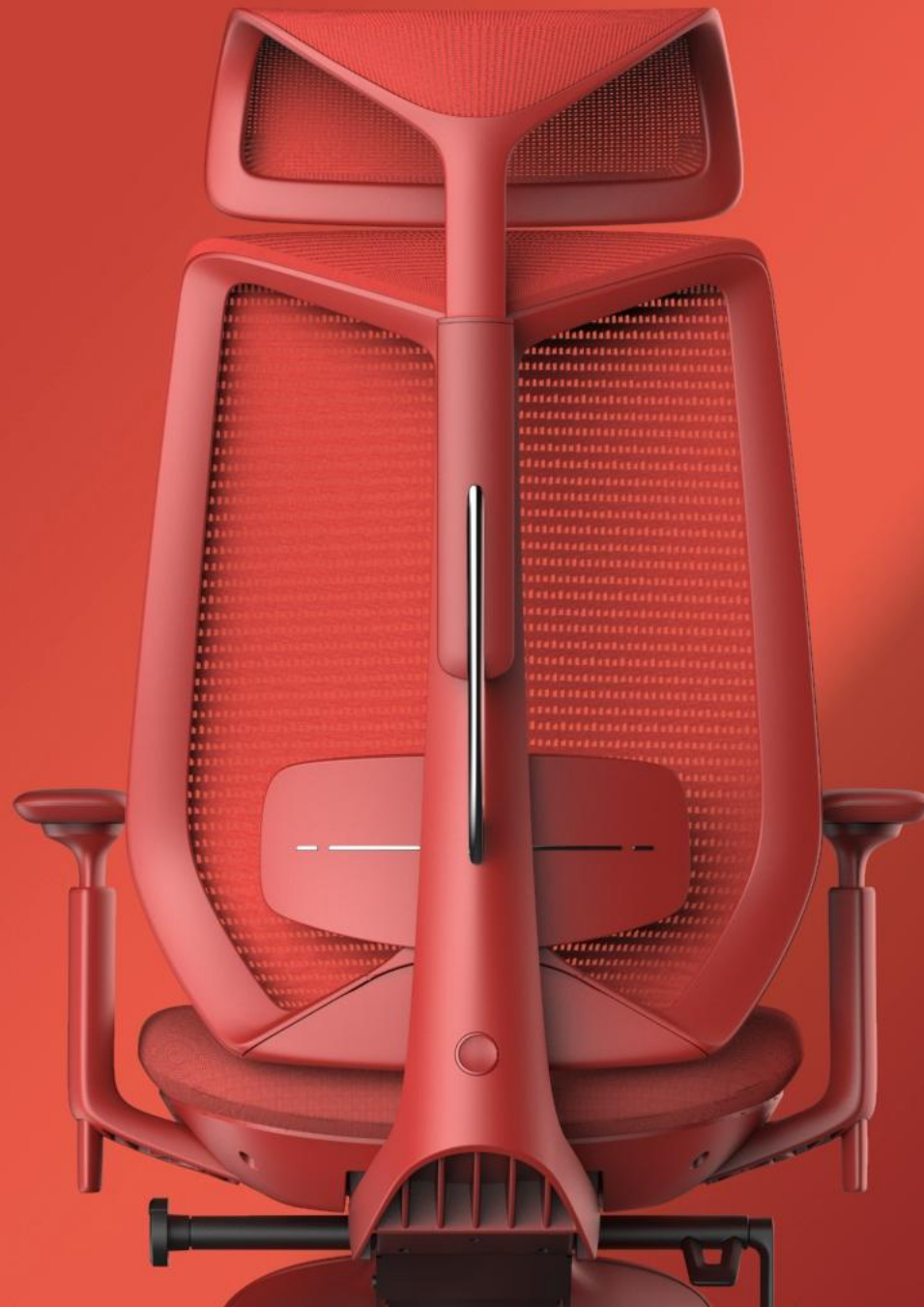


Titan

D270



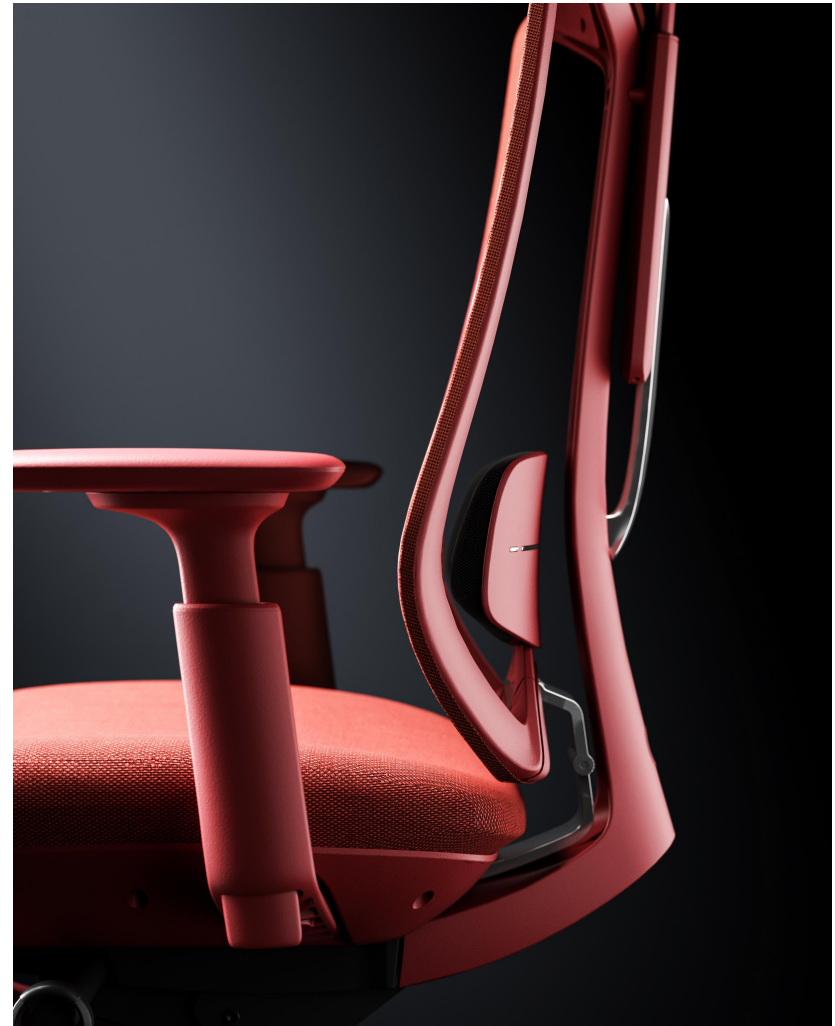


“

Inspired by the strength and innovation of the Industrial Revolution, Titan showcases modern industrial aesthetics and power with bold lines and sturdy structure, while paying homage to an era when mechanical advancements reshaped the world.

Its solid frame and synchronous control lumbar support provides just the right support at all times, symbolizing modern people's pursuit of efficiency and ergonomics. The footrest, reminiscent of mechanical devices from the industrial era, produces a subtle mechanical sound when flipped, as if the echo from the precise engagement of gears. The button-free armrest design continues the concept of simplified operation, making adjustments more efficient.

The holistic design not only preserves the mechanical beauty of that era but also brings an efficient and comfortable experience in modern workspaces.





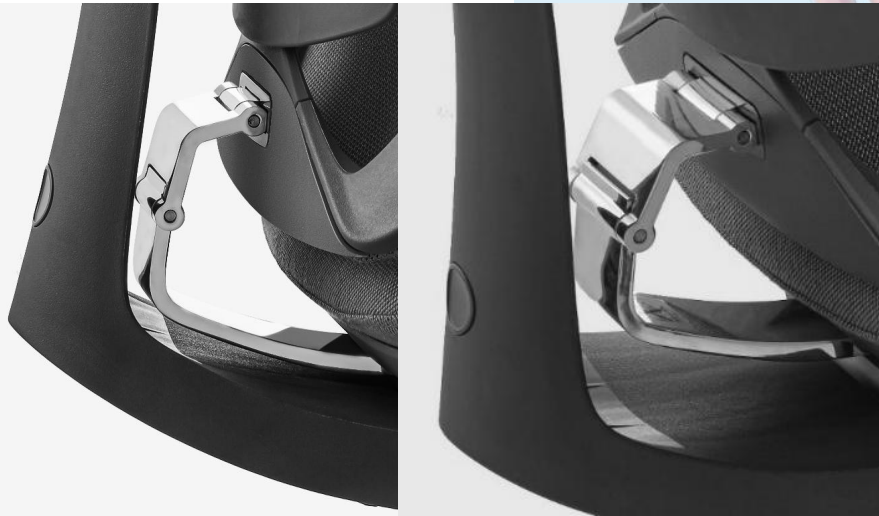
- Height adjustable lumbar support
6 positions with 50mm stroke distance

Innovative lumbar support system

Automatic Adjustment: The specially designed aluminum polished supporter enables the lumbar support to adapt dynamically to the user's back position in response to variations in the sitting posture.

Continuous Support: Whether the user leans forward or backward, the lumbar support maintains its flexibility and consistently aligns with the curvature of the user's lower back.

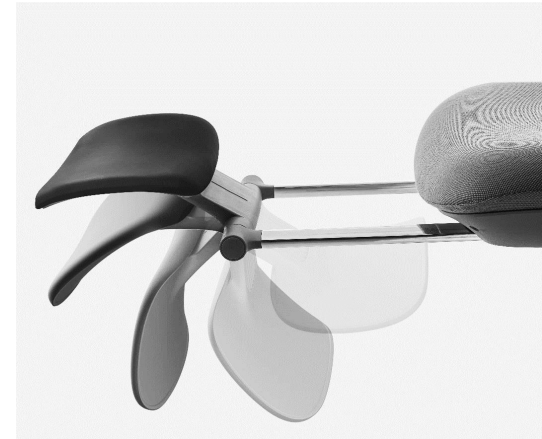
Stress Reduction: The design addresses deficiencies in lower support to the back caused by positional changes, effectively alleviating the body stress.





Seat depth adjustable

The seat can be slid forward and backward in 5 positions with a 45mm stroke distance, accommodating different stature and sitting postures.



Footrest adjustable

The footrest extends up to 250mm and rotates up to 170°, ensuring comfortable support for the legs.

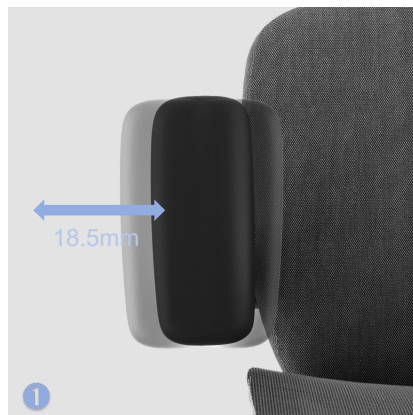


Breathable mesh headrest

The wide headrest conforms to the natural curve of the head and neck, ensuring comfortable support at various heights and reducing fatigue during long working hours.

- Adjustable headrest
10 positions of height adjustment, 70mm stroke distance.





4D Armrest

The 4D armrest features a button-free design, simple and elegant, with all round adjustment capabilities. It allows for up&down, forward&backward, left&right movement as well as rotation, precisely adapting to each user's preferences.



Easy adjustment

The mechanism features a 4-locking-position recline function, flexibly catering to different sitting needs in various scenarios. Switching between working and relaxation modes by simply pivoting the knob beside the seat.



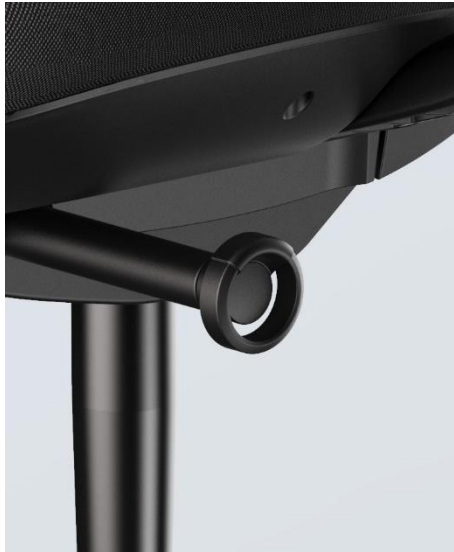
Seat height adjustment

Adjusting the seat height with the handle under the seat 90mm stroke distance.



Recline tension adjustment

Rotating the lever to adjust the recline tension of the backrest.



Reclining and locking

Turning the knob in either direction to switch reclining and locking.

135° wide-angle tilting



Work easily, relax fully

TITAN is developed for comfortable working experience, perfectly adapted to the diverse needs of modern office environments. The backrest automatically conforms to the back curve to relax the body from long working hours. By adding a footrest, it can also help to restore energy during snap hour.





Two frame colors are available for TITAN. The all black one is always the most classic style and the one in deep and vivid red injects energy and modernity into the workspace. The stylish design makes TITAN the focus in the collaborative working area.







Height adjustable headrest

10 positions of 70mm height adjustment,
Load bearing 80lbs.

Breathable mesh

Wintex fabric imported from South Korea, with a color fastness rating above level 4 and abrasion resistance of over 30,000 revolutions without breakage.

4D armrest

Height adjustment: 5-position 65mm stroke distance
Arm pad forward & backward sliding: 58mm stroke distance
Arm pad side-to-side sliding: 18.5mm stroke distance
Arm pad pivoted: 22° angle adjustment

Ergonomic backrest

Maximum reclining angle of 135°, perfectly conforming to the body shape.

Soft lumbar support

6 positions of 50mm height adjustment.

High-density molded foam

Compliant with CA117 fire retardant standard and BIFMA certified.

Class 4 Samhongsang gas lift

Height adjustment range of 90mm, suitable for various heights.

M08 synchron mechanism

22° synchronous tilting with 4 locking positions; built-in sliding function; rotating handle to adjust recline tension easily.

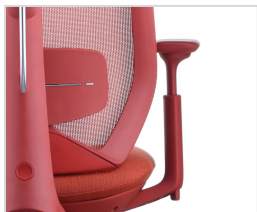
Durable nylon base

Stable structure with high load-bearing capacity.

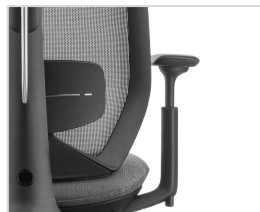


More options

Frame



Coral red



Black

Base



Coral red
BJ-N350 nylon base with PU castors

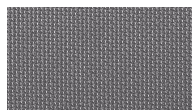


Black

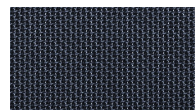
Headrest Mesh



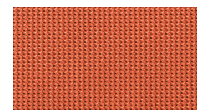
FB2501 Black



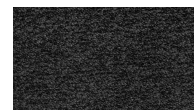
FB2502 Gray



FB2503 Blue



FB2504 Orange



FB2801 Dark Gray



FB2802 Green

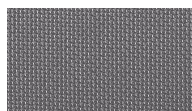


FB2803 Orange

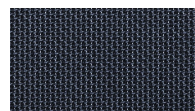
Back Mesh



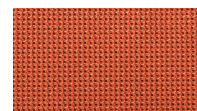
FB2301 Black



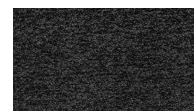
FB2302 Gray



FB2303 Blue



FB2304 Orange



FB2801 Dark Gray

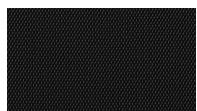


FB2802 Green

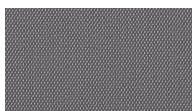


FB2803 Orange

Seat Fabric



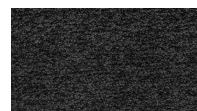
FC2701 Black



FC2702 Gray



FC2703 Orange



FC3401 Dark Gray



FC3402 Green



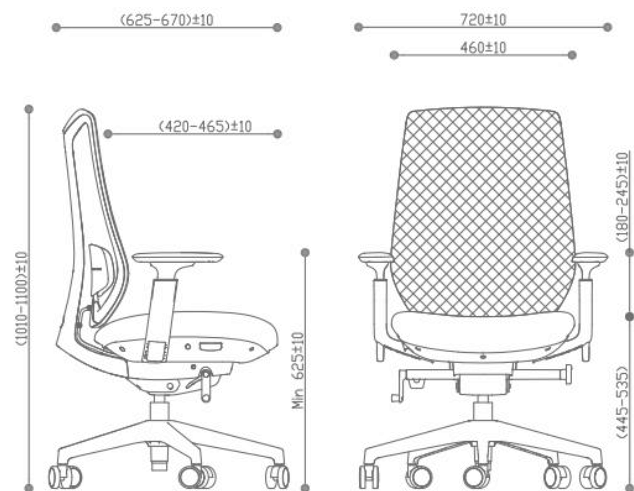
FC3403 Orange



FC1703 Dark Gray

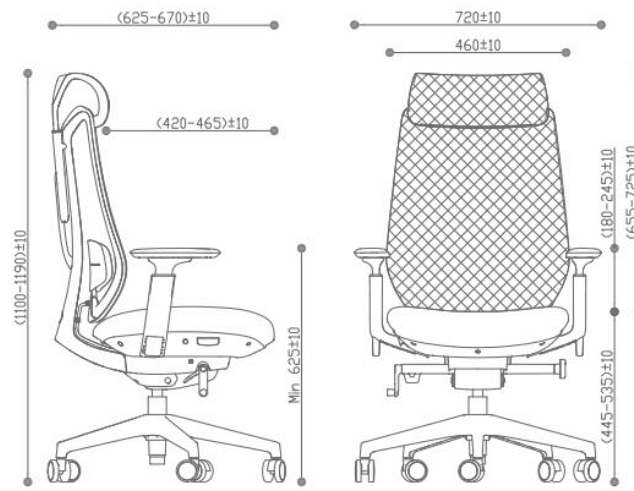
Lumbar Support Fabric

Size & Packing



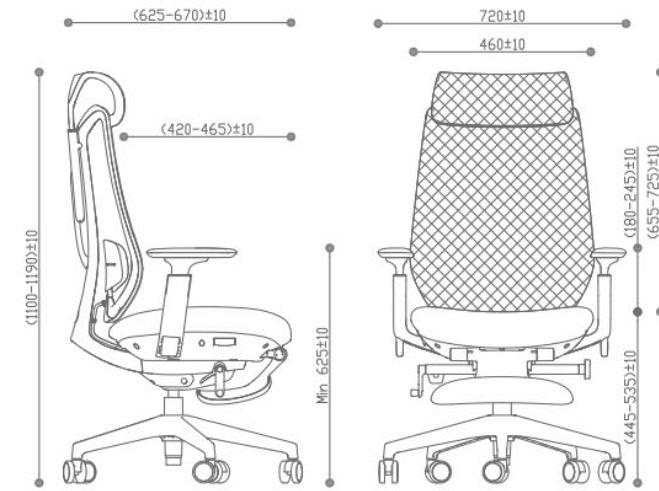
D270M

Carton size: 35"L*14-1/4"W*26"H/K=K 250P
Net weight: 19.1KGS Gross weight: 21.6KGS
CBM: 0.212m³
20GP: 134PCS // 40GP: 279PCS // 40HQ: 316PCS



D270H

Carton size: 35"L*14-3/4"W*26"H/K=K 250P
Net weight: 20KGS Gross weight: 23.5KGS
CBM: 0.22m³
20GP: 134PCS // 40GP: 279PCS // 40HQ: 315PCS



D270H With Footrest

Carton size: 35"L*13-3/4"W*26"H/K=K 250P
Net weight: 21.7KGS Gross weight: 25.1KGS
CBM: 0.205m³
20GP: 143PCS // 40GP: 299PCS // 40HQ: 341PCS



CONTACT US

B.one Industrial Park

Factory: No.1,3 Youyi Road, Tangxia Town, Dongguan, Guangdong, China

Tel: +86-769-8685 6607 Fax: +86-769-8685 5577

Global Operations Office

A2101, Xintian CBC, Shixia North Road II, Futian District, Shenzhen, China

Tel: +86-755-8282 8666 Fax: +86-755-8371 7161

www.cjfurniture.com.cn

