

TWINKLE Chair

D269





Every creature in nature has its own charming curves and arcs, as if it has been accurately designed by God.

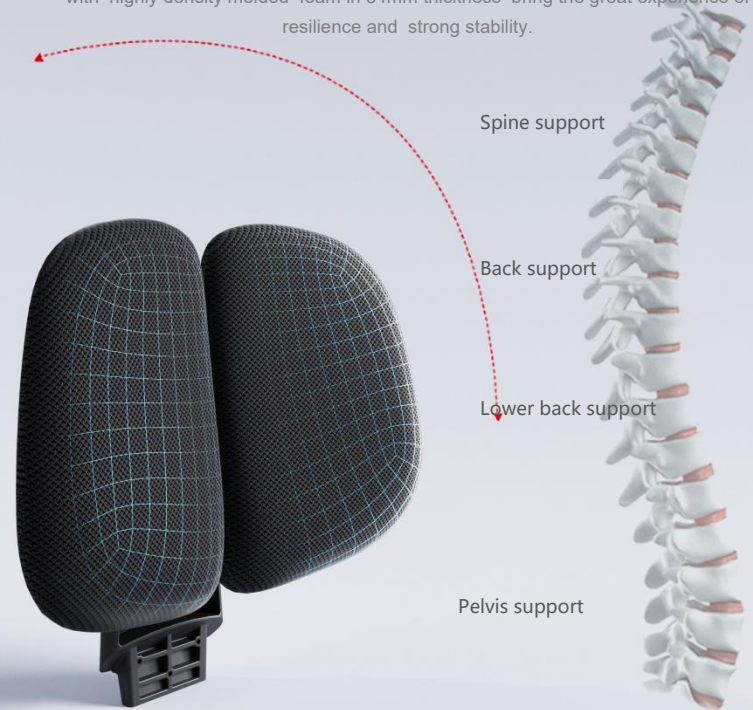
The design inspiration for TWINKLE Chair draws on the elegant arc curves of the shell, which is the result of linking of ergonomics, comfort and aesthetics by the designer. The unique two-piece lumbar support is like a gesture of shell opening, perfectly providing upward support for your waist, reducing pressure and eliminating fatigue. The widen armrest and thicker seat cushion bring it a simple profile yet in a strong character. The white decoration dot on the back sparkles like a vivid pearls, seems telling why it's named TWINKLE.



Ergonomic Backrest

Two-piece lumbar support in large arc
fully fits the body waist

The scientific two-piece lumbar support naturally fits the users' body curve and easily supports their spine and back. The modernized profile with its elastic PP cover merged with highly density molded foam in 54mm thickness bring the great experience of resilience and strong stability.





W-shape Seat

The seat cushion is designed in a W shape, which strengthening the contact area between the seat and the body, spreading the pressure of the hips, maximizing the support to the hips and thighs.



Adjustable Seat Depth

Served by the operating lever under the seat, the seat depth can be locked in 7 different positions with a stroke distance of 60mm, to adapt to different sitting postures.

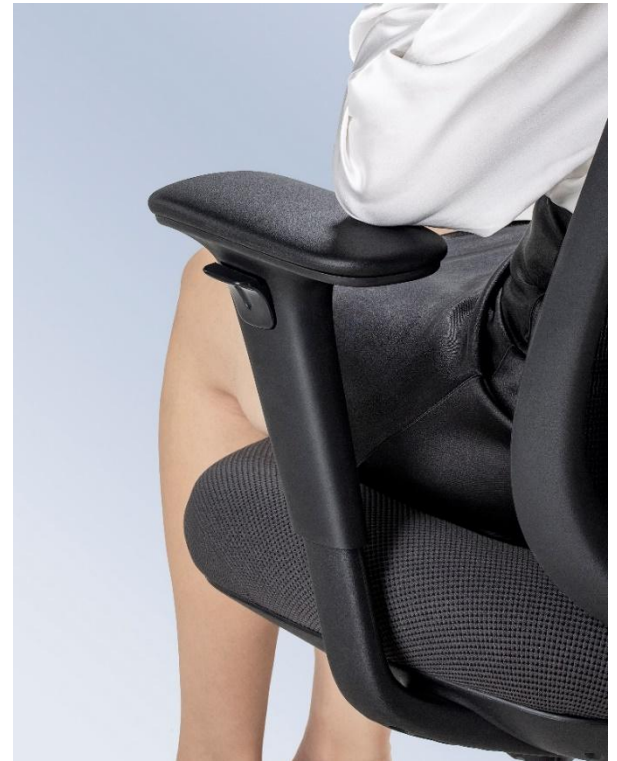


Height Adjustable Headrest

Adapt to different body shapes, naturally fit the curvature of the heads and necks of different users.

- Detachable freely; passed 80 lbs strength test;
- Height adjustable in 15 positions, 120mm stroke distance;
- Good for users of various heights.





The wide armrests offer great comfort to the users, allowing the elbows and arms be supported well while using tablet and smartphone even if the seat is tilted back.





Design for Various Ambience

The TWINKLE Chair provides support and movement highly adaptable with human body and sitting posture, helping users find the most comfortable and healthy sitting posture, meeting the different needs of users.

With the practical and pleasing design, the TWINKLE Chair is an perfect option for office and home.





Height Adjustable Headrest

15 locking positions, 120mm up&down stroke distance;
Passed 80 lbs strength test standard.

1D Armrest

7 locking positions, 65mm up&down stroke distance;
Breezily releases stress on elbows and arms.

High Density Molded Foam

CA117 fire retardant standard;
Seat sliding forward&backward in 7 positions, 60mm
stroke distance.

Synchro Mechanism

23° back tilting in 3 locking positions, with rotary knob to
meet the comfort tilt tension;
100%BIFMA standard.

Newly Developed Mesh

CA117 fire retardant standard;
Color fastness up to level 4;
Wear-Resistant Test 30,000 times without broken yarn.

Curved Backrest

Maximum 135° recline angles, perfectly fitting
the body shape.

High Resilience Two-piece Lumbar Support

CA117 High Density of molded foam
providing highly flexibility and comfort.

Class 3 Gas Lift

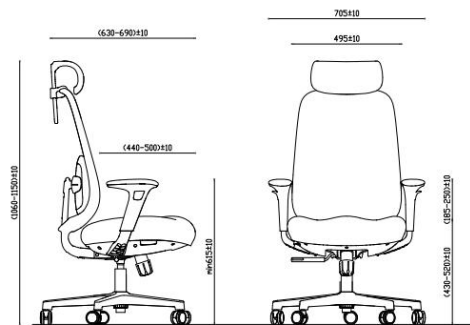
Effective stroke 90mm, suitable
for different heights.

Plastic/Chrome/Aluminum Base Optional

Stable structure and 300lbs load-
bearing capacity



Size&Packing



B269SH1-A

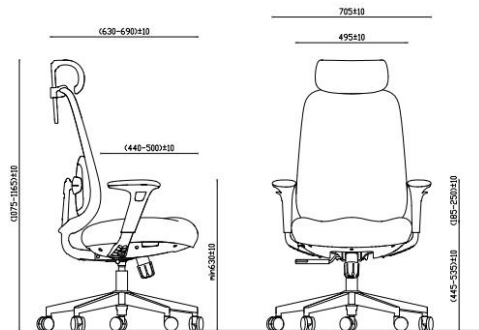
Carton Size: 32"L*12-3/4"W*26"H

QTY Per Carton: 1PC

Net Weight: 17.8KGS Gross Weight: 21KGS

Loading QTY: 20GP: 169PCS//40GP: 348PCS//40HQ: 400PCS

CBM (m3): 0.1738



B269SH1-B

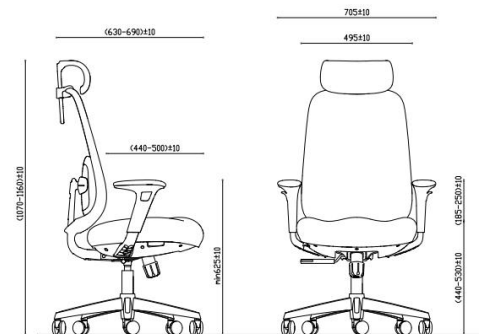
Carton Size: 32-1/4"L*13-1/4"W*22"H

QTY Per Carton: 1PC

Net Weight: 18.9KGS Gross Weight: 22.5KGS

Loading QTY: 20GP: 192PCS//40GP: 390PCS//40HQ: 448PCS

CBM (m3): 0.154



B269SH1-C

Carton Size: 32"L*12-3/4"W*26"H

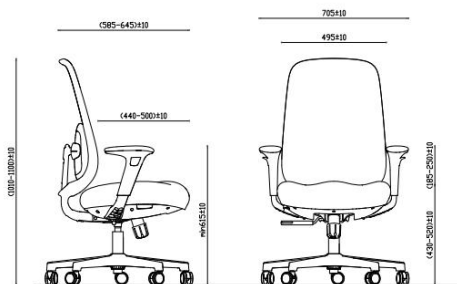
QTY Per Carto: 1PC

Net Weight: 18.1KGS Gross Weight: 21.3KGS

Loading QTY: 20GP: 169PCS//40GP: 348PCS//40HQ: 400PCS

CBM (m3): 0.1738

Size&Packing



B269SM1-A

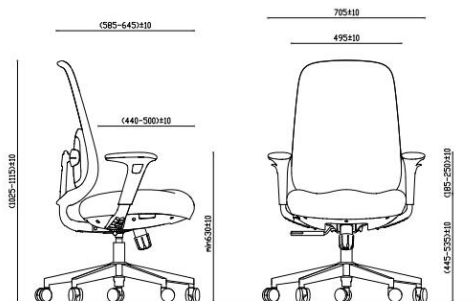
Carton Size: 32"L*12-3/4"W*26"H

QTY Per Carton: 1PC

Net Weight: 17.0KGS Gross Weight: 20.2KGS

Loading QTY: 20GP: 169PCS//40GP: 348PCS//40HQ: 400PCS

CBM (m³): 0.1738



B269SM1-B

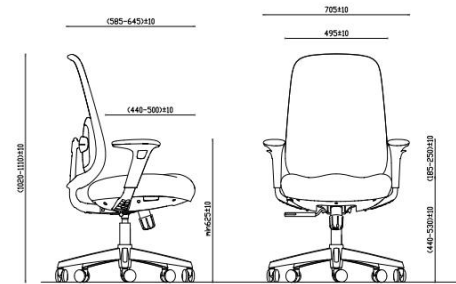
Carton Size: 32-1/4"L*13-1/4"W*22"H

QTY Per Carton: 1PC

Net Weight: 18.1KGS Gross Weight: 21.6KGS

Loading QTY: 20GP: 192PCS//40GP: 390PCS//40HQ: 448PCS

CBM (m³): 0.154



B269SM1-C

Carton Size: 32"L*12-3/4"W*26"H

QTY Per Carton: 1PC

Net Weight: 17.8KGS Gross Weight: 21KGS

Loading QTY: 20GP: 169PCS//40GP: 348PCS//40HQ: 400PCS

CBM (m³): 0.1738

Options

Mechanism



G015-13

Base



Black Nylon Base

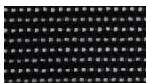


Aluminum Polished Base



Steel Chrome Base

Back Mesh



FB2901
Black-grey



Blue



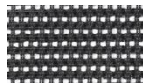
Green



Orange



Burgundy



Grey-white

Seat/Lumbar Support Fabric



FC3701 Dark Grey



CONTACT US

B.one Industrial Park

Factory: No.1,3 Youyi Road, Tangxia Town, Dongguan, Guangdong, China
Tel: +86-769-8685 6607 Fax: +86-769-8685 5577

Global Operations Office

A2101, Xintian CBC, Shixia North Road II, Futian District, Shenzhen, China
Tel: +86-755-8282 8666 Fax: +86-755-8371 7161

www.cjfurniture.com.cn

