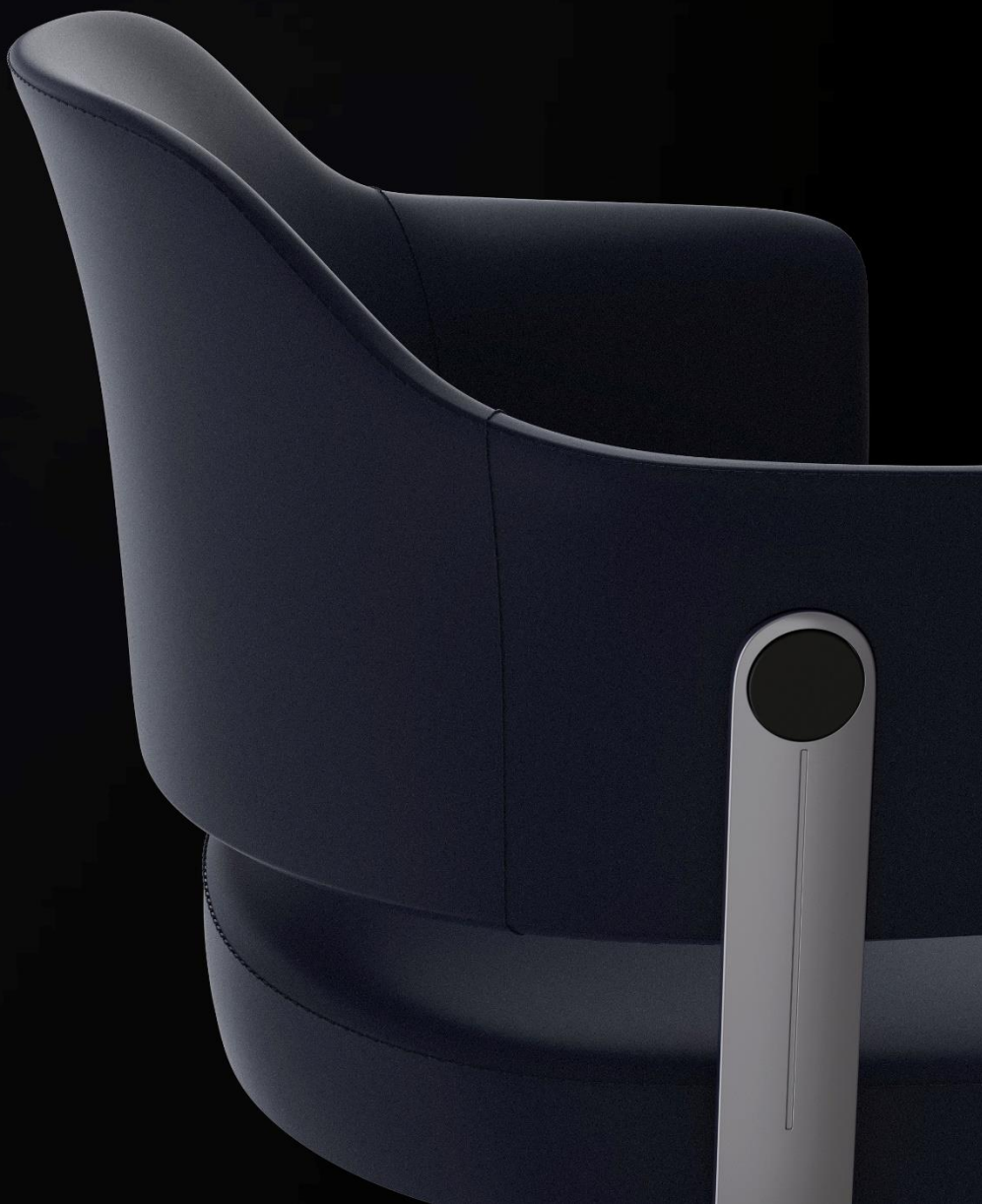


LARS

D328

Create an elegant space style





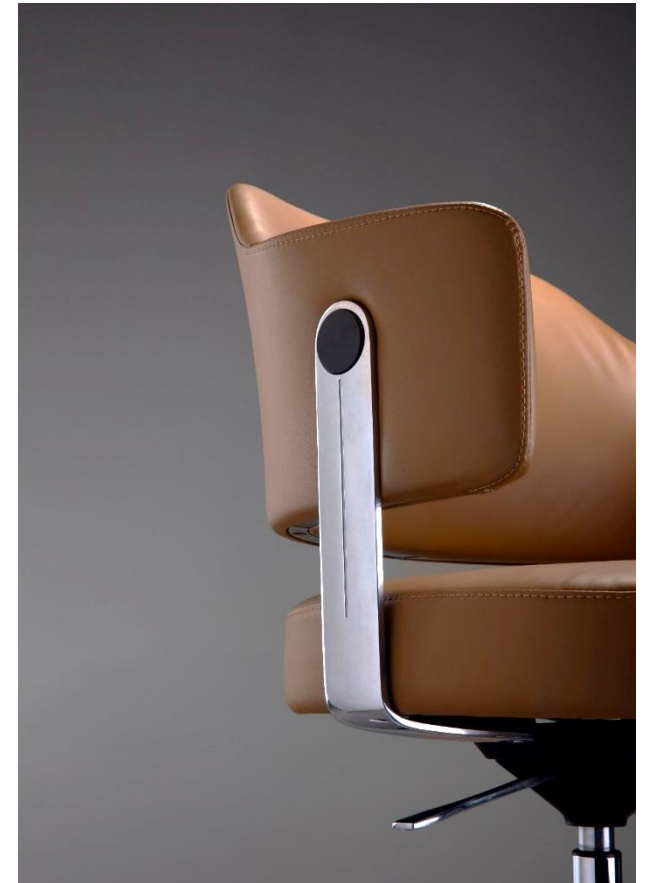
DESIGN CONCEPT

Graceful curves,
dynamic and elegant

Lars is an artistic lounge chair, inspired by the elegant curves of piano design. Combining supreme quality and unique design, it presents an elegant and noble temperament. When you sit on it , you could relax, create or find inspiration with great comfort.



**Fashionable
& Elegant**
Highlight your
unique taste



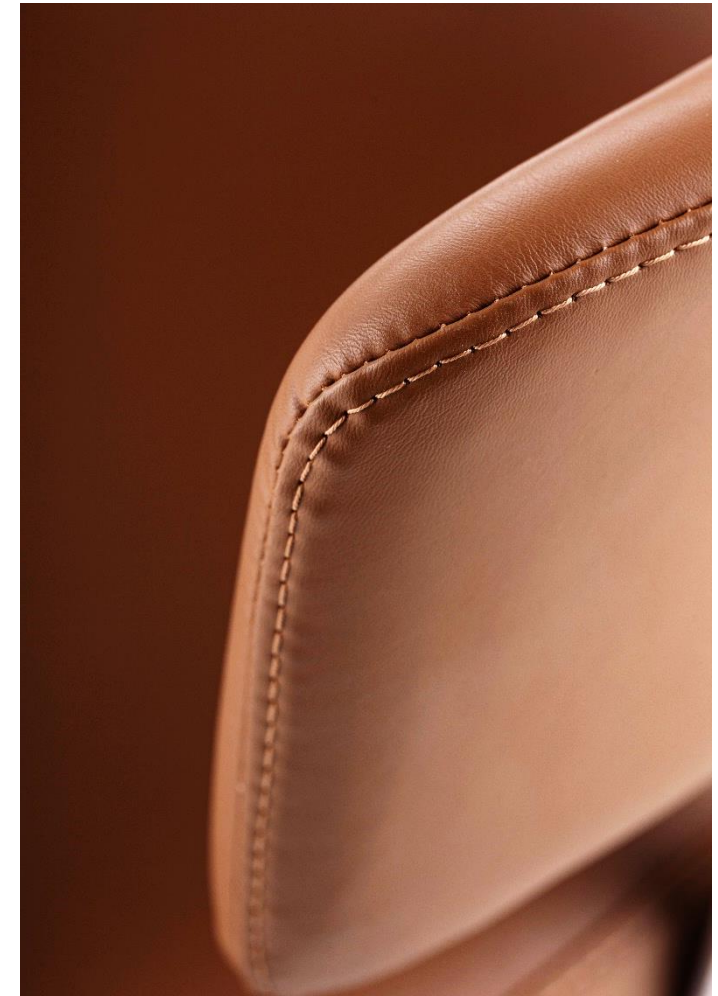
The decorative buttons on the armrests are like the buttons on high-end suits. This design not only adds a sense of luxury to the chair, but also covers the necessary connecting screws on the armrests.



Exquisite sewing technology

Even strokes and long lasting

The smooth external stitching lines with even strokes enhance the outstanding temperament of the Lars chair. The moment you sit down, there are clear supporting points for your head, neck, back, and lower back which make your body completely relaxed with the comfort and flexible support.





Meeting & Training

Lars combines the simplest elements to create an elegant and modern atmosphere, meeting the needs of work and meeting scenarios, promoting a pleasant mood for employees, fostering more creativity and bringing vitality and unlimited potential to the enterprises.

Collaboration & Networking

The creative and minimalist visual style with beautiful curved design of Lars creates a more relaxed and dynamic environment, making face-to-face communication more pleasant and relaxed.

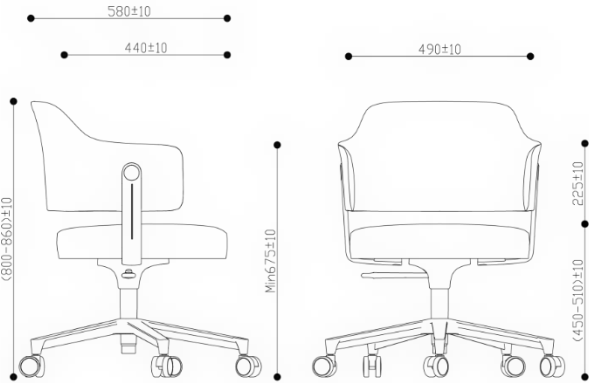


Lars is designed with a fashionable and detail-oriented approach. The chair has unique shape and smooth lines, showcasing a modern aesthetics. It's suitable for meeting and training rooms, combining a sense of quality with a low-key design, this chair can provide users with comfortable sitting positions and a pleasant visual experience.

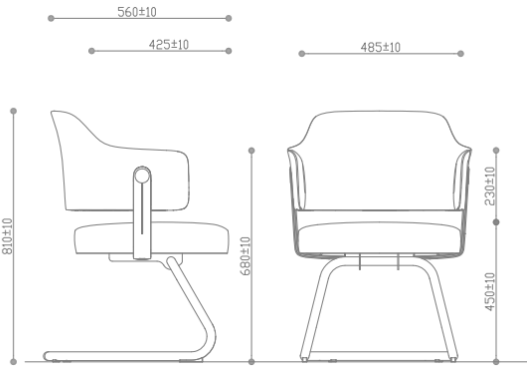


The comfortable and soft seat of Lars perfect blends with the elegant base, presenting a harmonious aesthetics. Their lines are well-defined and complement each other, creating a contrasting effect that makes the whole chair more unique and eye-catching.

Size & Packing



Carton size: 25-1/2"L*21-1/4"W*20-1/4"H (RSC) /K=K /250P 1PC/Carton
Net weight(KG): 13.5 **Gross weight(KG):** 16.2
Loading capacity: 20GP : 144PCS 40GP : 304PCS 40HQ : 380PCS
CBM (m³) : 0.182



Carton size: 24-1/2"L*22-3/4"W*19-1/2"H (RSC) /K=K /250P 1PC/Carton
Net weight(KG): 12.8 **Gross weight(KG):** 15.3
Loading capacity: 20GP : 144PCS 40GP : 300PCS 40HQ : 375PCS
CBM (m³) : 0.1781

PU Leather



PU0901 Amber



PU0902 Navy blue



CONTACT US

B.one Factory

Add: No.1,3 Youyi Road,Tangxia Town,Dongguan City,
Guangdong Province,China

Tel: +86-769-8685 5575 Fax: +86-769-86856603

WSK Home Furnishing Co., Ltd

Add: A2101, Xintian CBC, Shixia North Road II, Futian District
Shenzhen City, Guangdong Province, China

Tel: +86-755-82828666 Fax: +86-755-83717161

www.cjfurniture.com.cn

